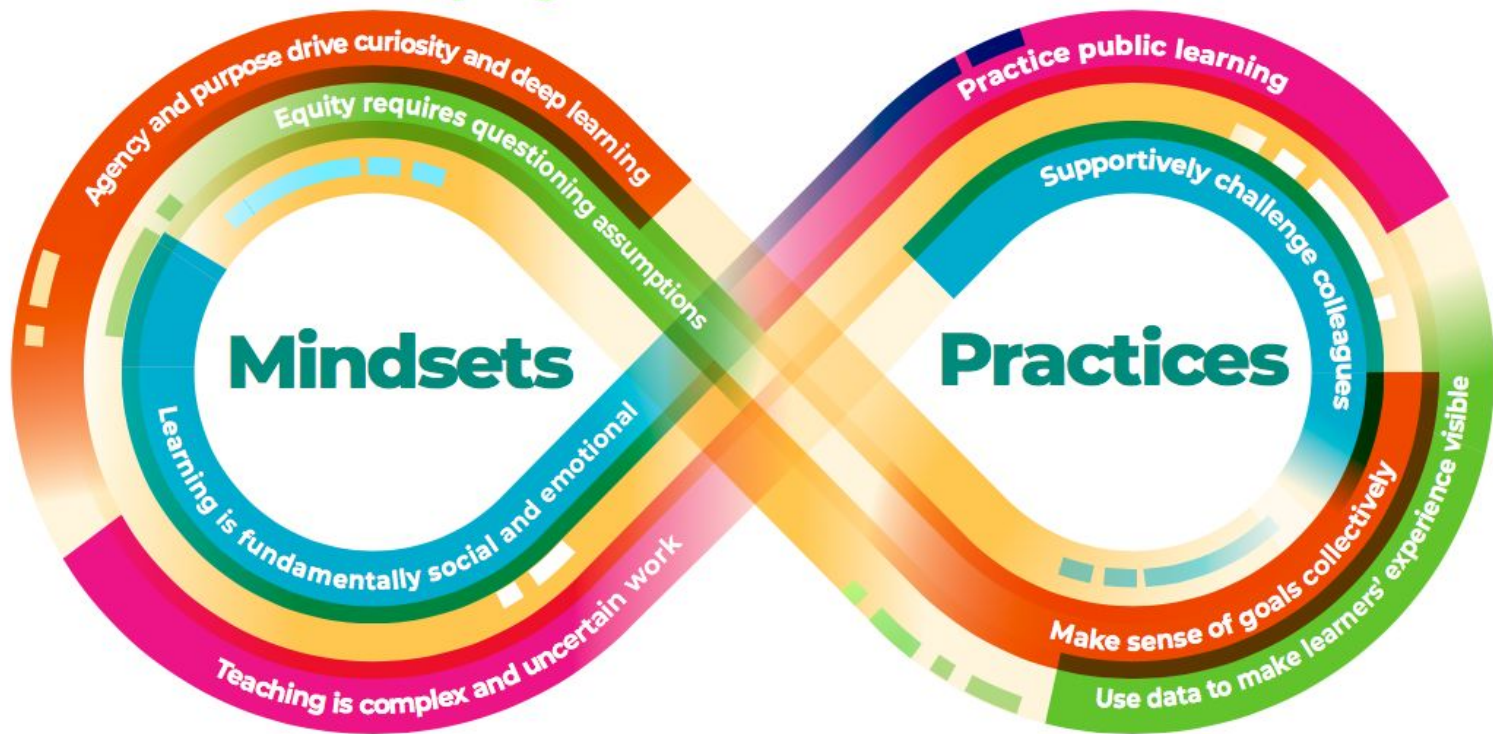


MILLS TEACHER SCHOLARS

**HONORING**  
and **BUILDING**

from  
what **Teachers**  
are Learning

# Creating Conditions for Adult Learning in Service of Equity



**MILLS** TEACHER  
SCHOLARS

Understand Learning, Improve Teaching © Mills Teacher Scholars

**Self-improvement  
requires self-awareness.**  
Self-awareness is built in collaboration  
and with compassion.

# MILLS TEACHER SCHOLARS

Understand Learning, Improve Teaching

## What do students need most this fall?:

How Oakland Unified's Office of SEL is supporting teachers and students to build social and emotional skills in service of learning



Aija Simmons

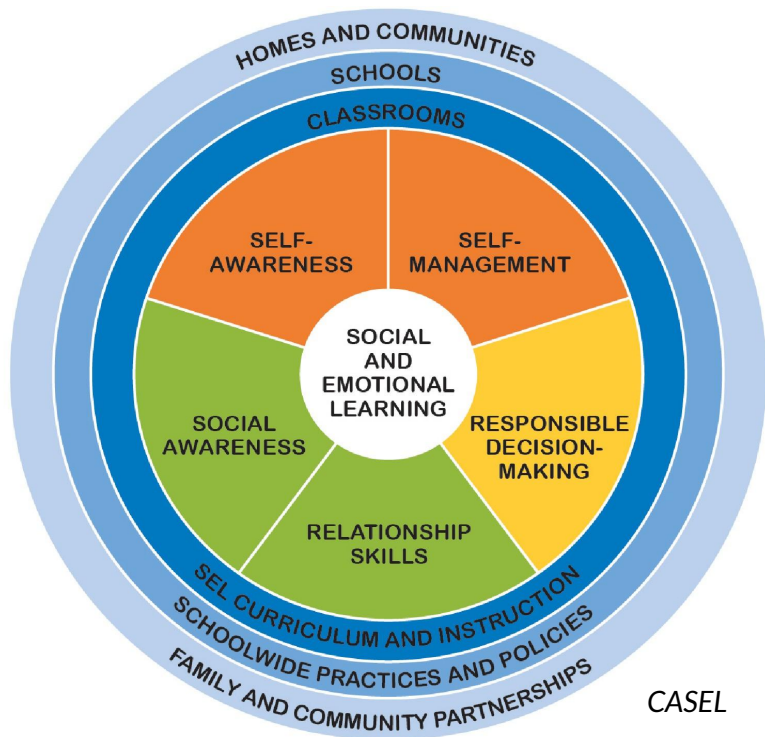
Program Manager

Office of Social and Emotional Learning  
Oakland Unified School District



Malia Tayabas-Kim

Teacher Leader, Oakland Unified  
Facilitator, Mills Teacher Scholars



### Autonomy

- Voice
- Choice
- Empowerment

### Belonging

- Community
- Respectful and supportive relationships
- Shared values, norms

### Competence

- Efficacy
- Collaborate and help
- Responsibility
- Skills

*Center for the Collaborative Classroom*

# Creating Belonging- Oriented Learning Communities

## DISCOVER

What strengths, feelings, and passions do my learners bring into our community (or how can I find out)?

## PRACTICE

How can I build on their strengths, feelings, and passions to create a community where all learners feel they belong?

## REFLECT

How will I understand whether I am creating a community of belonging and what I might need to change?

# Creating Belonging- Oriented Learning Communities



## DISCOVER

What strengths, feelings, and passions do my learners bring into our community (or how can I find out)?

# Pause and Reflect

**What is resonating? What do you want to keep thinking about?**

We'd love to hear from you in the chat box!

# Creating Belonging- Oriented Learning Communities



## PRACTICE

How can I build on their strengths, feelings, and passions to create a community where all learners feel they belong?



# Pause and Reflect

**What is resonating? What do you want to keep thinking about?**

We'd love to hear from you in the chat box!

# Creating Belonging- Oriented Learning Communities



## REFLECT

How will I understand whether I am creating a community of belonging and what I might need to change?

# Creating Belonging- Oriented Learning Communities

## DISCOVER

What strengths, feelings, and passions do my learners bring into our community (or how can I find out)?

## PRACTICE

How can I build on their strengths, feelings, and passions to create a community where all learners feel they belong?

## REFLECT

How will I understand whether I am creating a community of belonging and what I might need to change?

# MILLS TEACHER SCHOLARS

Understand Learning, Improve Teaching

## Lead by Learning

## NETWORK

Dynamic support  
for leadership teams

**JOIN US!**

RESERVE YOUR TEAM'S SPOT NOW.



# Pause and Reflect

- **How might the Discover-Practice-Reflect questions inform work at your site?**
- **Where/When/With whom can you imagine putting this process into practice?**

We'd love to hear from you in the chat box!

# Closure

“It is a relief to name the uncertainty in teaching by framing a question about one’s work. In this way we undo the myth of certainty that pervades our field these days. It is liberating to know what you know and what you need to know more about so you can continuously improve your practice.”

—Anna Richert, founder, Mills Teacher Scholars

teacherscholars.org

